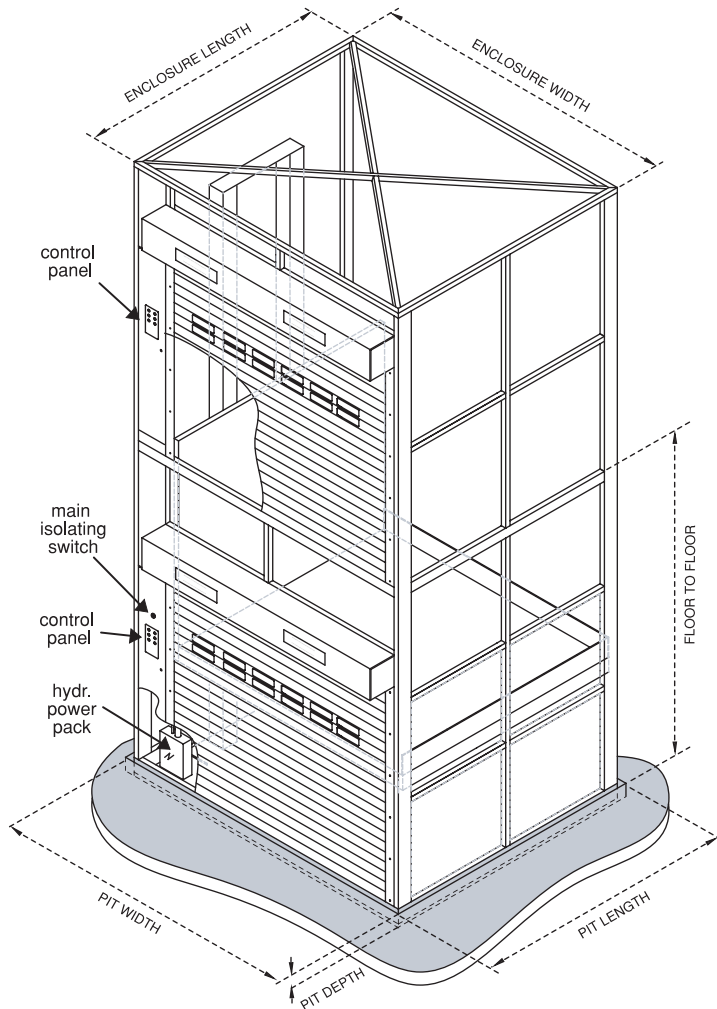




FREE STANDING GOODS HOIST



FREE STANDING GOODS HOIST



All Southwell hoists exceed the design and safety standard requirements of the Australian Standards and all WHS regulations

Benefits

- Cost effective alternative to a traditional lift
- Does not require a lift shaft
- Can be installed external or internal to the building
- Minimal pit & overrun requirements
- Low maintenance costs
- Self diagnostic programmable logic control (PLC)



Options

- Goods Personnel Hoist with safety features to AS1735 Parts 3, 12, 16 & BCA E3.6.
- Walls & roof on platform – load protected during use
- Roller shutters or gates on platform – load fully enclosed during use
- Platform finishes - industrial enamel, 2 pack epoxy, stainless steel, aluminium chequer plate, industrial grade vinyl, etc
- Doors – aluminium with viewing panel, steel, or stainless steel, standard or high duty cycle motors.
- Doors can be same sides, opposite side or 90 degrees or walkthrough.
- 2 level, 3 level, 4 level or more.
- Fabricated steel chequer plate ramp when pit is not possible
- 12 metres per minute lift speed
- Bolt together style where access is limited.
- Custom configurations & capacities available on request
- Inshaft Goods Hoists & Car Hoists also available.

MAIN DIMENSIONS

MODEL	SGH-0909	SGH-1515	SGH-2018	SGH-2418	SGH-2424	SGH-3024
Platform (l x w)	0.9m x 0.9m	1.5m x 1.5m	2.0m x 1.8m	2.4m x 1.8m	2.4m x 2.4m	3.0m x 2.4m
Capacity	350kg	1500kg	1000kg	1000kg	1500kg	1500kg
Enclosure Length	1070mm	1640mm	2140mm	2540mm	2540mm	3140mm
Enclosure Width	1500mm	2100mm	2400mm	2400mm	3100mm	3100mm
Pit Depth	90mm	125mm	125mm	125mm	195mm	195mm

Note: Above measurement may vary for Goods Personnel Option. Contact Southwell for details.

WARRANTY 3 years full warranty and 10 year structural warranty (subject to service agreement with Southwell Lifts & Hoists)